

YOUR SIGNATURE IS REQUIRED FOR APPROVAL BEFORE ANY RELEASE OF PRODUCTION DRAWINGS

SIGNATURE

DATE

**TOLERANCES**

CUTOUTS +/- 1/16

OVERALL FOAM THICKNESS & CAVITY DEPTHS +/- 1/8

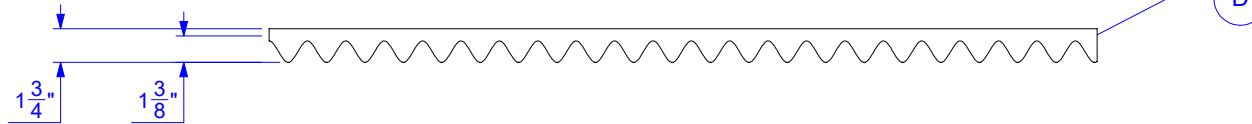
GLUED TO CASE TOP  BASE  VELCRO  EXTRA

REVISIONS

REV.	DESCRIPTION	DATE	INITIALS
p.00	Initial Release	7/22/2016	MK
r.01	Cutout modification	11/18/2016	MK
p.01	Modification r.01 approved	1/23/2017	MK
p.01.1	MODIFIED THICKNESS LAYER B AND C FOR PRODUCTION	07/12/2017	KD
p.01.2	REMOVED NOTE GLUE LID	2019-08-09	KD
p.01.3	CORRECTED CAVITY DEPTH	2025-04-16	GP

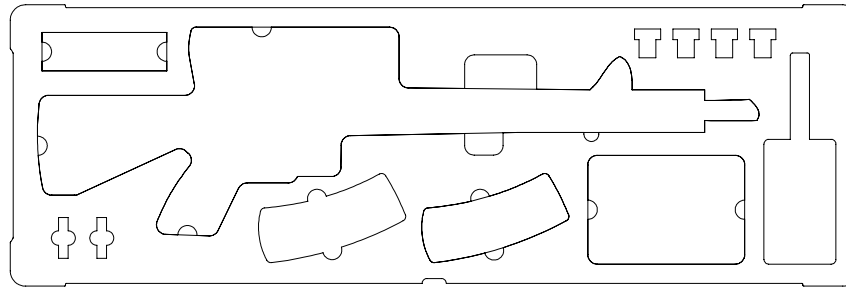
LID TRAY - ELEVATION

CV STANDARD



D

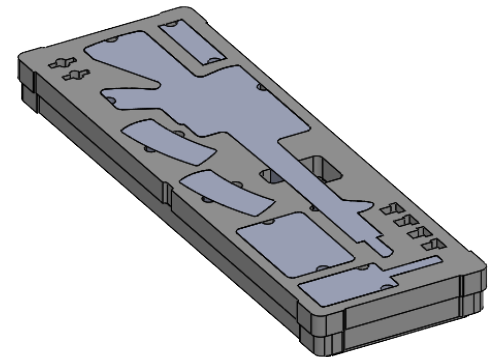
BASE TRAY



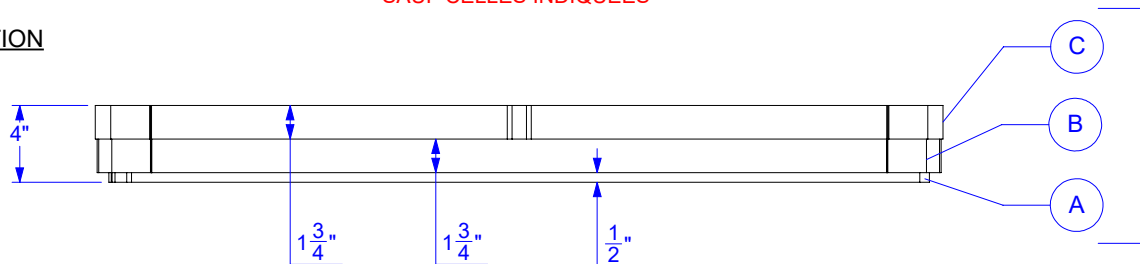
NE PAS COLLER LES PLUGS

CAVITIES ARE 3 1/2" UNLESS OTHERWISE INDICATED

TOUTES LES CAVITÉS ONT 3 1/2" SAUF CELLES INDIQUÉES



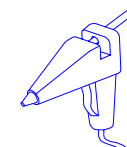
BASE TRAY - ELEVATION



C

B

A



FOAM DENSITY MAY VARY  
 DIMENSIONS ARE IN INCHES UNLESS OTHERWISE SPECIFIED

YOUR SIGNATURE IS REQUIRED FOR APPROVAL BEFORE ANY RELEASE OF PRODUCTION DRAWINGS

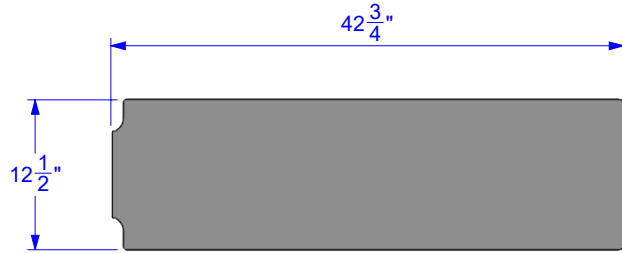
SIGNATURE

DATE

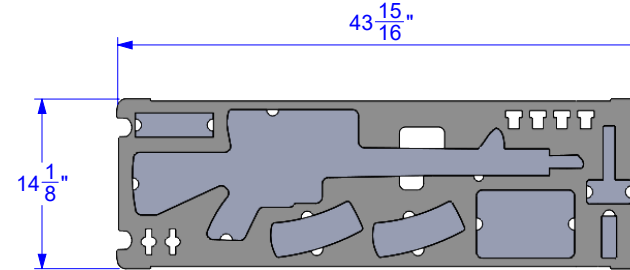
**TOLERANCES**

CUTOUTS +/- 1/16

OVERALL FOAM THICKNESS & CAVITY DEPTHS +/- 1/8

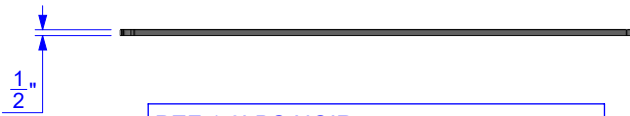


A

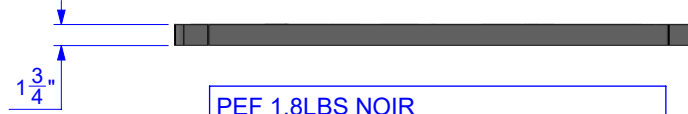


B

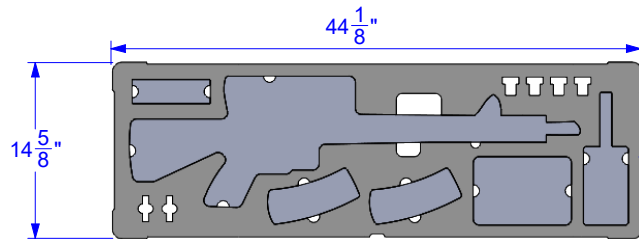
KEEP ALL PLUGS LOOSE



PEF 1.8LBS NOIR MATERIAL		
-	109"	1
LINEAR IN	DETAIL	QTY

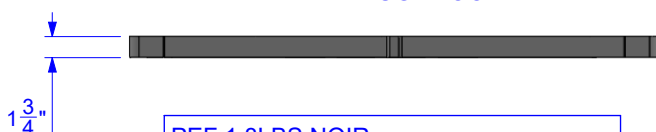


PEF 1.8LBS NOIR MATERIAL		
-	371"	1
LINEAR IN	DETAIL	QTY

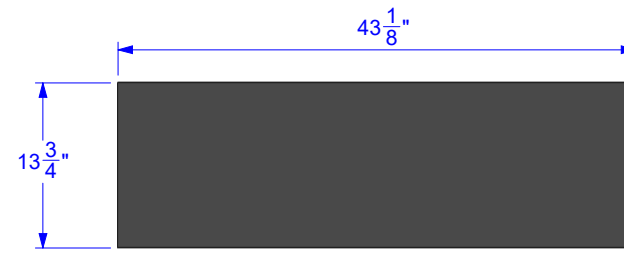


C

KEEP ALL PLUGS LOOSE



PEF 1.8LBS NOIR MATERIAL		
-	370"	1
LINEAR IN	DETAIL	QTY



D



PUF P150-55 BLK 2-3/8" THICK 5/8 BASE MATERIAL		
-	116"	1
LINEAR IN	DETAIL	QTY

FOAM DENSITY MAY VARY. DIMENSIONS ARE IN INCHES UNLESS OTHERWISE SPECIFIED

YOUR SIGNATURE IS REQUIRED FOR APPROVAL BEFORE ANY RELEASE OF PRODUCTION DRAWINGS

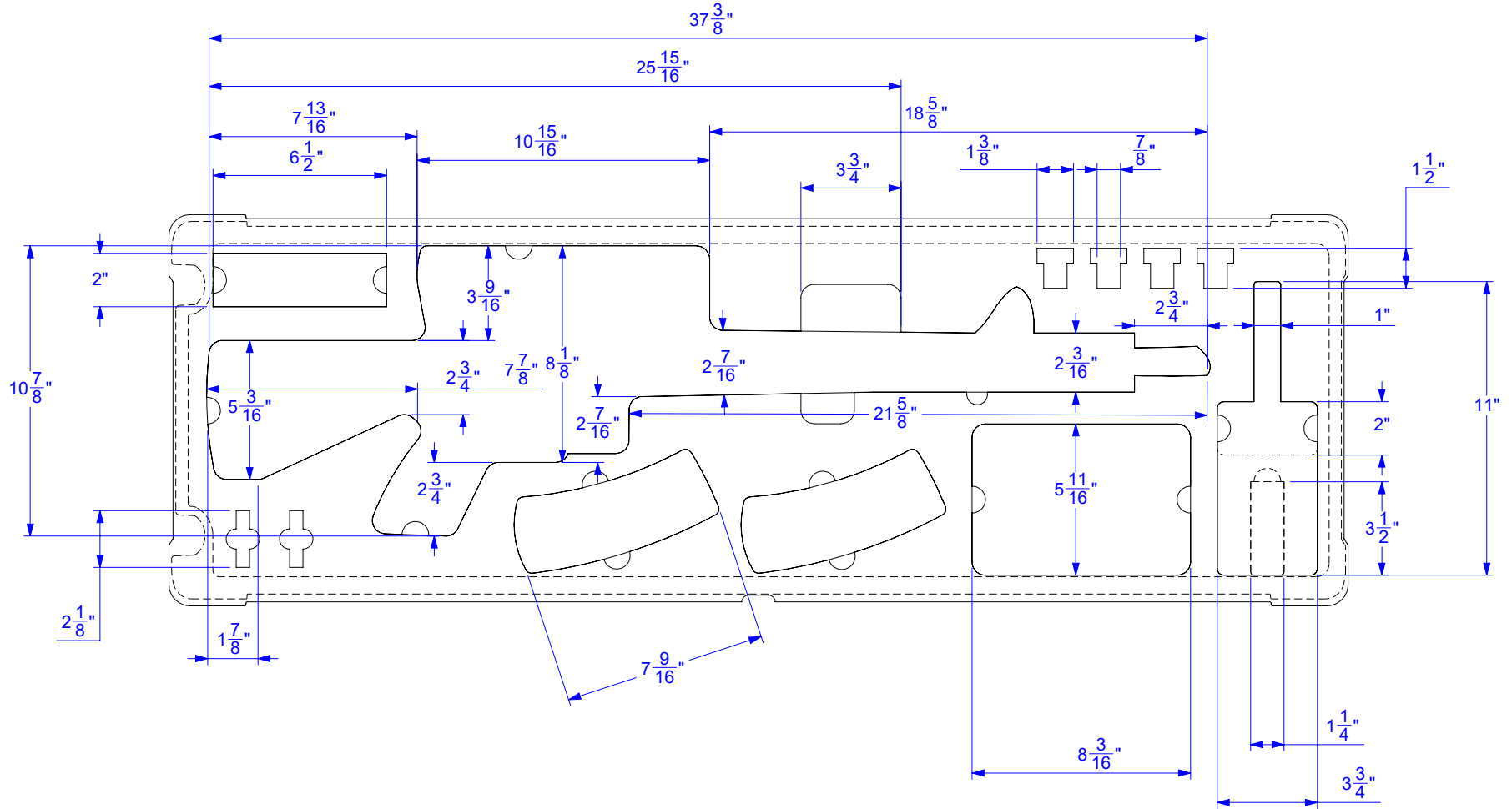
**TOLERANCES**

CUTOUTS +/- 1/16

OVERALL FOAM THICKNESS & CAVITY DEPTHS +/- 1/8

SIGNATURE

DATE



FOAM DENSITY MAY VARY  
 DIMENSIONS ARE IN INCHES UNLESS OTHERWISE SPECIFIED