

YOUR SIGNATURE IS REQUIRED FOR APPROVAL BEFORE ANY RELEASE OF PRODUCTION DRAWINGS

SIGNATURE

DATE

TOLERANCES

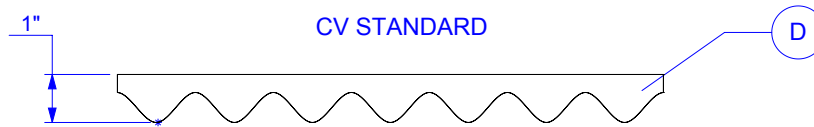
CUTOUTS +/- 1/16

OVERALL FOAM THICKNESS & CAVITY DEPTHS +/- 1/8

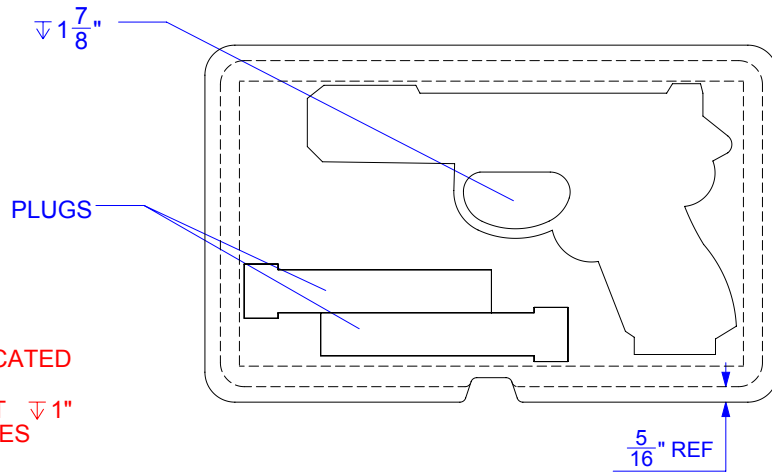
GLUED TO CASE TOP BASE VELCRO EXTRA

REVISIONS			
REV.	DESCRIPTION	DATE	INIT
a.01	RÉVISION GÉNÉRALE	11/15/2017	MK
p.00	MISE EN PRODUCTION	11/20/2017	MK

LID TRAY - ELEVATION



BASE TRAY

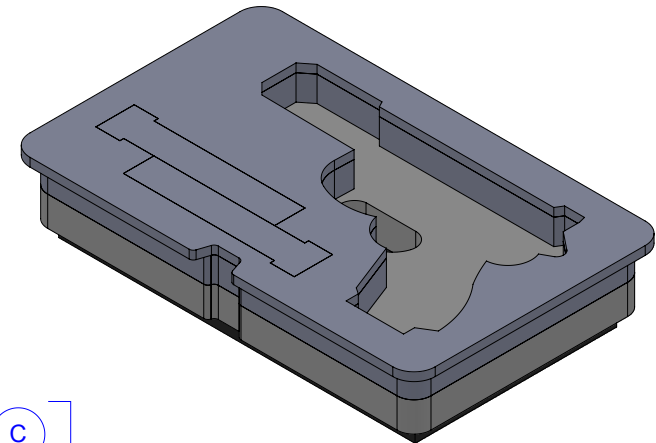


CAVITIES ARE ∇ 1" UNLESS OTHERWISE INDICATED

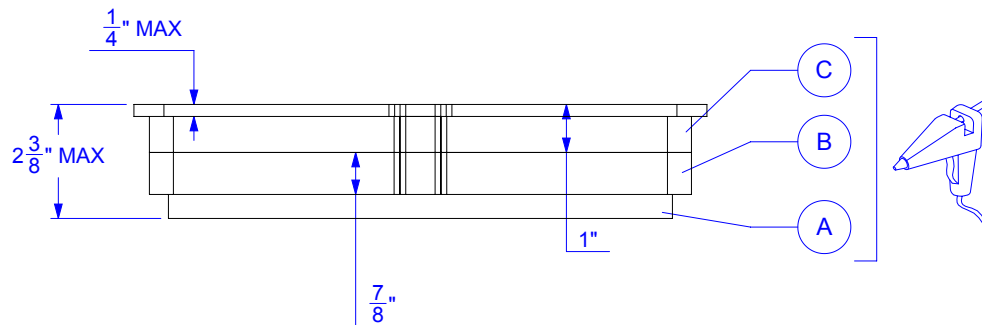
TOUTES LES CAVITÉES ONT ∇ 1" SAUF CELLES INDIQUÉES

ALL PLUGS ARE TO BE LOOSE UNLESS OTHERWISE INDICATED /

TOUTES LES PLUGS DOIVENT ETRE LIBRE SAUF INDICATIONS CONTRAIRE



BASE TRAY - ELEVATION



FOAM DENSITY MAY VARY. DIMENSIONS ARE IN INCHES UNLESS OTHERWISE SPECIFIED

YOUR SIGNATURE IS REQUIRED FOR APPROVAL BEFORE ANY RELEASE OF PRODUCTION DRAWINGS

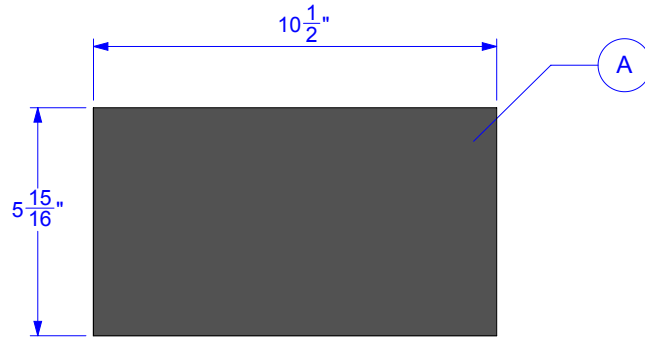
SIGNATURE

DATE

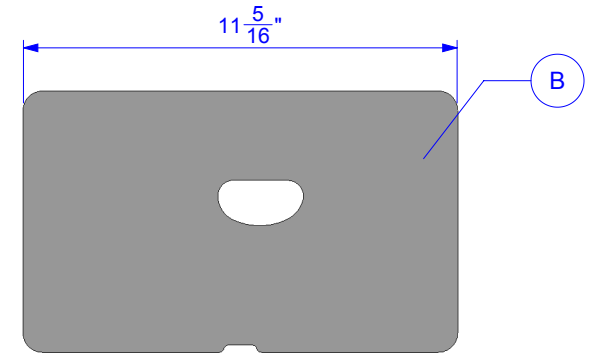
TOLERANCES

CUTOUTS +/- 1/16

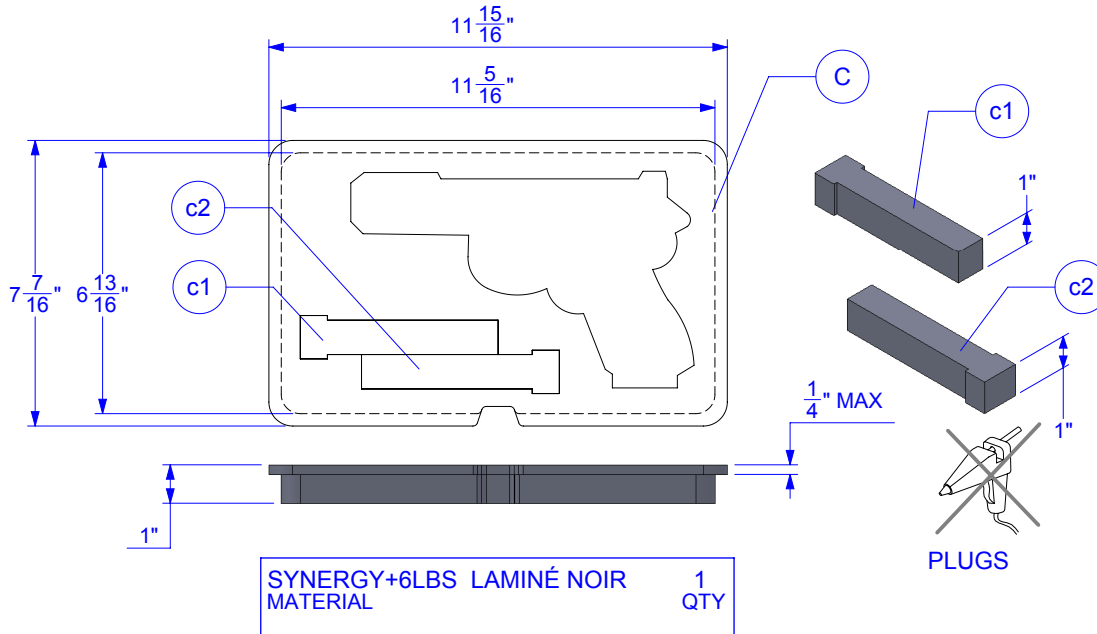
OVERALL FOAM THICKNESS & CAVITY DEPTHS +/- 1/8



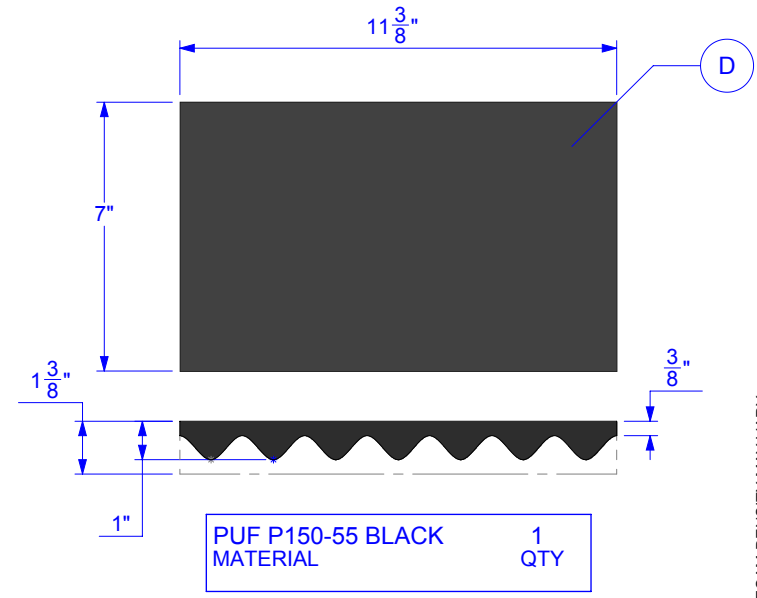
SYNERGY NOIR MATERIAL 1 QTY



SYNERGY NOIR MATERIAL 1 QTY



SYNERGY+6LBS LAMINÉ NOIR MATERIAL 1 QTY



PUF P150-55 BLACK MATERIAL 1 QTY

FOAM DENSITY MAY VARY
DIMENSIONS ARE IN INCHES UNLESS OTHERWISE SPECIFIED



1059, boulevard des Entreprises Ouest
 Terrebonne, QC Canada J6Y 1V2
 Tel 450-628-1006 1.800.783.6883
 Fax 450-628-7801 1.888.783.6883
 www.plasticase.com

GLOCK

PROJECT

909_NANUK

PRODUCT

b_17333FV.909_PLASTICASE_GLOCK_p.00

DWG ID

STATUS

YOUR SIGNATURE IS REQUIRED FOR APPROVAL BEFORE ANY RELEASE OF PRODUCTION DRAWINGS

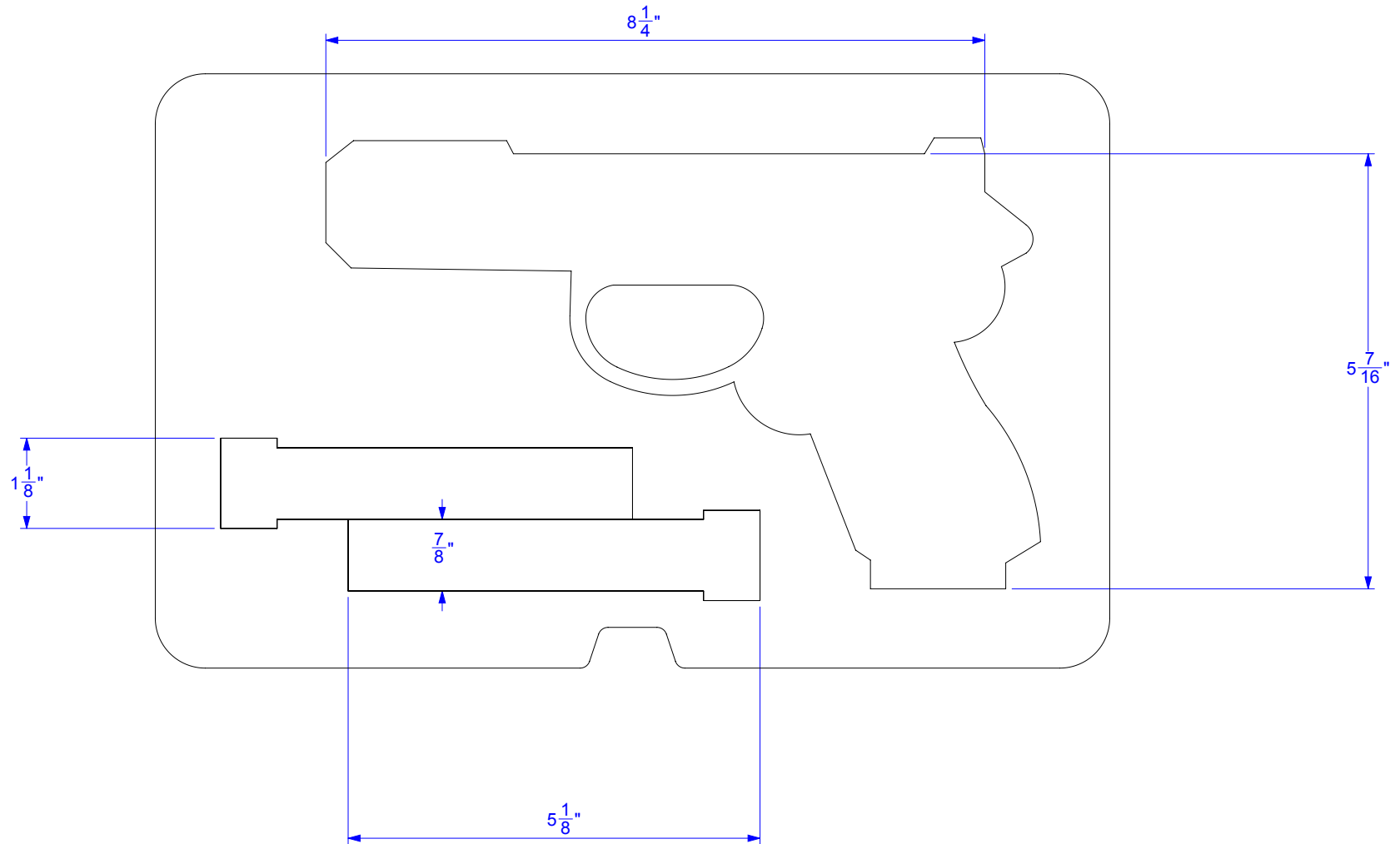
TOLERANCES

CUTOUTS +/- 1/16

OVERALL FOAM THICKNESS & CAVITY DEPTHS +/- 1/8

SIGNATURE

DATE



FOAM DENSITY MAY VARY.
 DIMENSIONS ARE IN INCHES UNLESS OTHERWISE SPECIFIED

PROPRIETARY AND CONFIDENTIAL

THE INFORMATION CONTAINED IN THIS DRAWING IS THE SOLE & EXCLUSIVE PROPERTY OF PLASTICASE INC. ANY REPRODUCTION IN PART OR WHOLE WITHOUT THE WRITTEN PERMISSION OF PLASTICASE INC. IS PROHIBITED.

DO NOT SCALE DRAWING
 SHEET SCALE 1:2

Frank Vitiello
 REPRESENTATIVE

Martin Keighan
 DESIGNER

2017-11-01
 DATE

3/6