

PRODUCT FEATURES

CONSTRUCTION

- 12MM BIRCH VENEER PLYWOOD WITH HPL EXTERIOR FACE AND PVC INTERIOR FACE
- PENN ELCOM HARDWARE

INSTALLED EQUIPMENT (INCLUDED)

- 2X MONITOR VESA ATTACHMENTS FOR 24 IN AND 22 INCH MONITORS, 100X100/75X75 VESA MOUNTS
- 12RU RACK STRIPS LOCATED AT THE FRONT AND BACK
- 1X 2RU TRAY, 1X 2RU DRAWER, 1X 3RU DRAWER
- 2X POWERBOARD

INSTALLED EQUIPMENT (NOT INCLUDED)

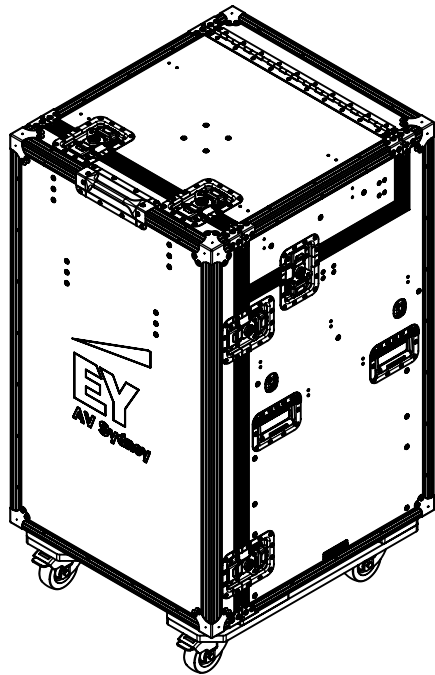
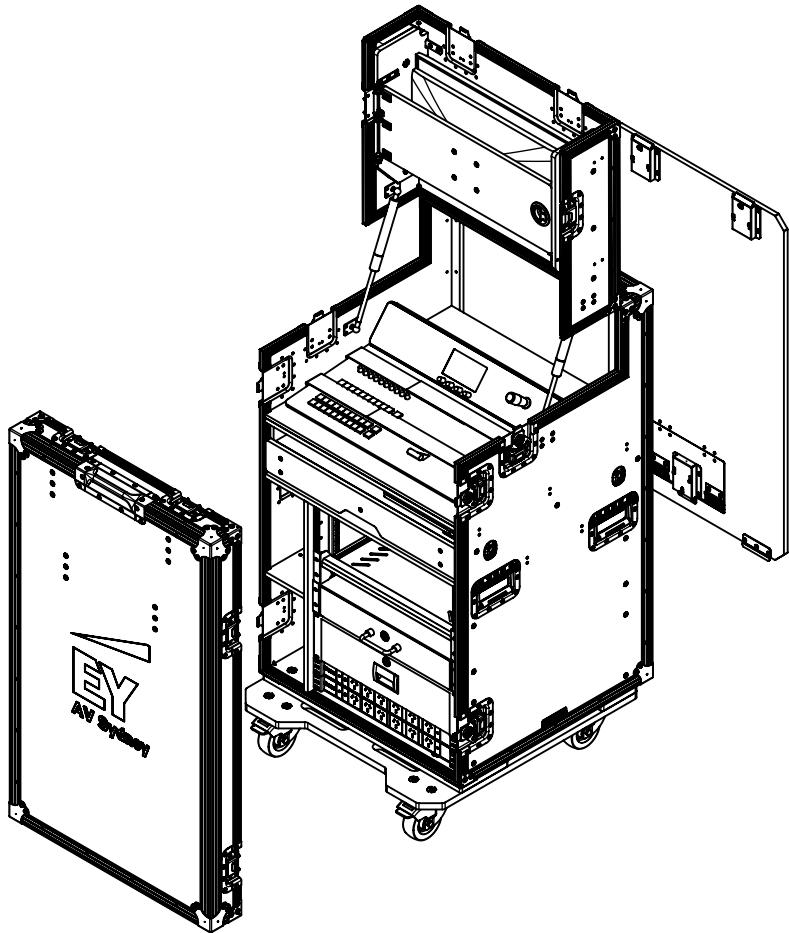
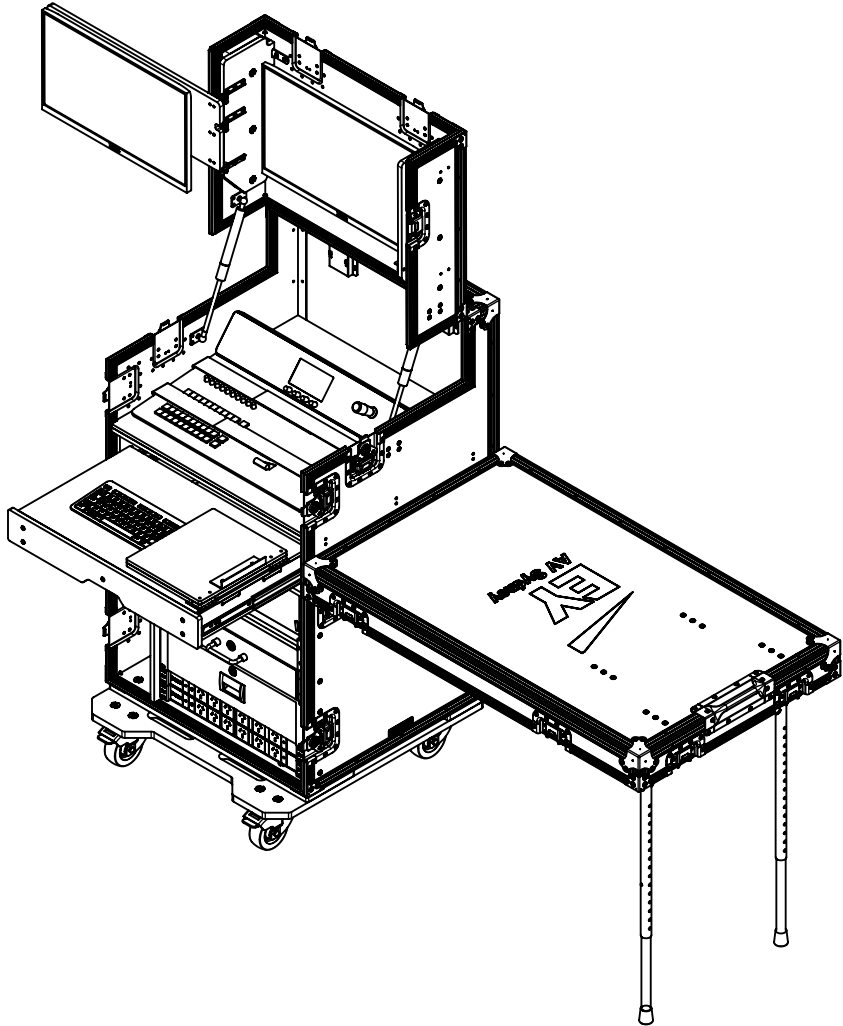
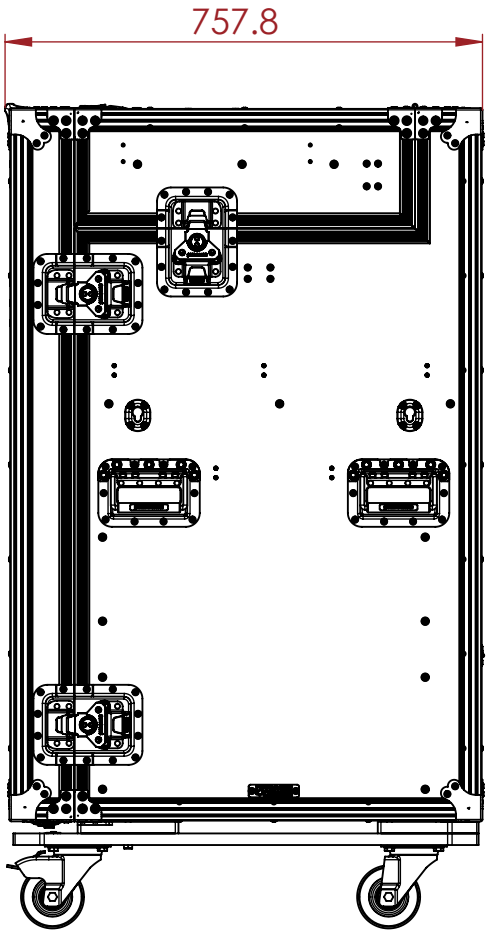
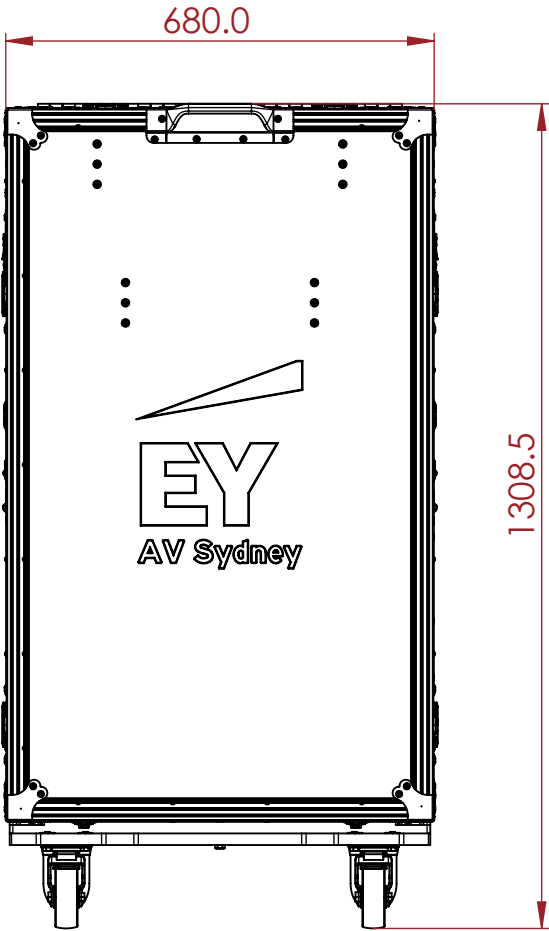
- 1X 24 INCH - (DELL P2422H)
- 1X 22 INCH - (DELL P2222H)
- ATEM TELEVISION STUDIO 4K8
- KEYBOARD

FEATURES

- FRONT LID CAN BE SETUP ON THE RIGHT OR LEFT SIDE OF THEWORKSTATION
- SLAM LID LOCATED ON THE BACK
- DUAL POCKETS LOCATED ON THE LEFT SIDE WITH 134MM WIDTH
- PULL OUT KEYBOARD DRAWER WITH FLIP OUT MOUSE PAD
- GAS STRUTS SUPPORTED TOP LID
- FLIP OUT SECOND MONITOR

KEY MEASUREMENTS

- FOLDABLE TABLE TOP HEIGHT 870MM
- FRONT TO BACK RACK STRIP DISTANCE AT 562MM
- REAR RACK STRIPS TO REAR PANEL DISTANCE 50MM



NOTES:
UNLESS SPECIFIED IN THE DRAWING,
ALL PRODUCTS DISPLAYED IN THIS
DRAWING OTHER THAN THE CASE
ITSELF IS NOT PART OF OUR PRODUCT
OFFERING.

ESTIMATED WEIGHT (CASE ONLY):
105.41 KG

ITEM CODE:
WS-FP1-BM-ATVS4K8

DRAWN BY: RP
CHECKED BY: AS

SCALE:
NTS



MAIL : sales@armorcases.com.au
WEB : www.armorcases.com.au