

PRODUCT FEATURES

CONSTRUCTION

- 12MM HIGH QUALITY DOUBLE SIDED LAMINATED BIRCH PANEL
- PENN ELCOM HARDWARE

INSTALLED EQUIPMENT INCLUDED

- 4X 12RU RACK STRIPS LOCATED AT FRONT AND BACK ON THE 2 RACK BAYS
- 2X 4RU RACK STRIPS LOCATED BELOW THE 40" TV
- 1X POWERBOARD

NOT INCLUDED

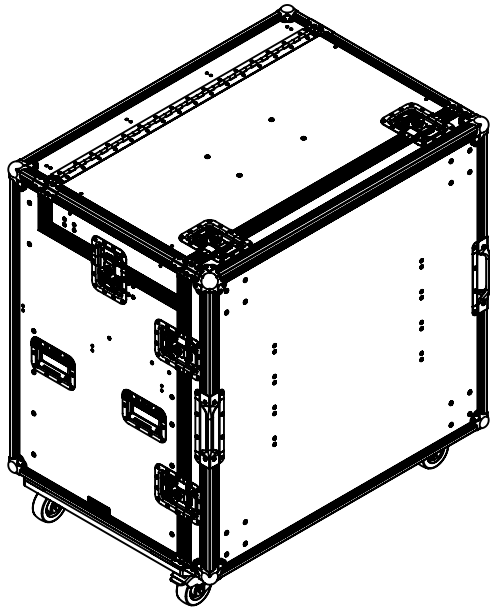
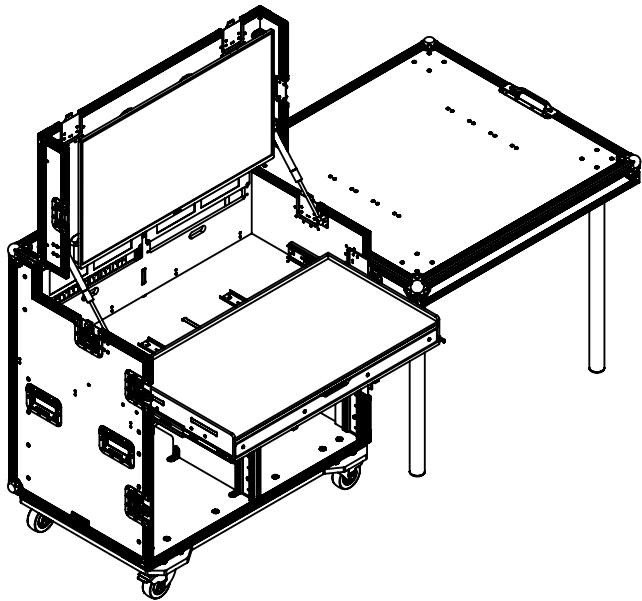
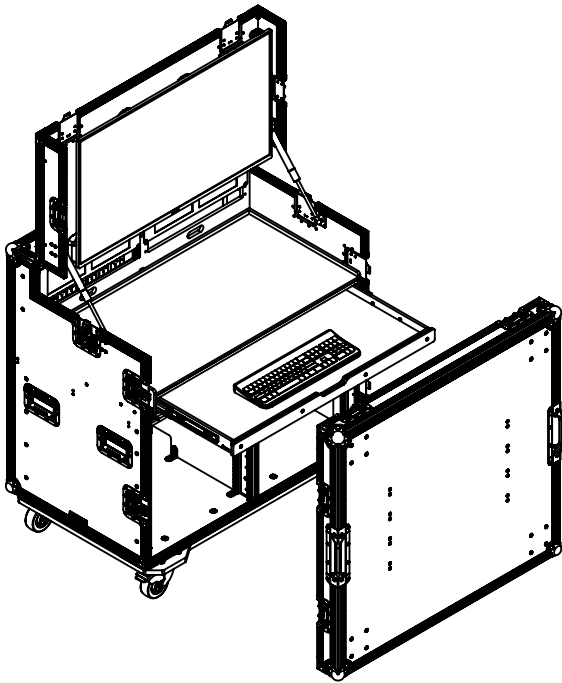
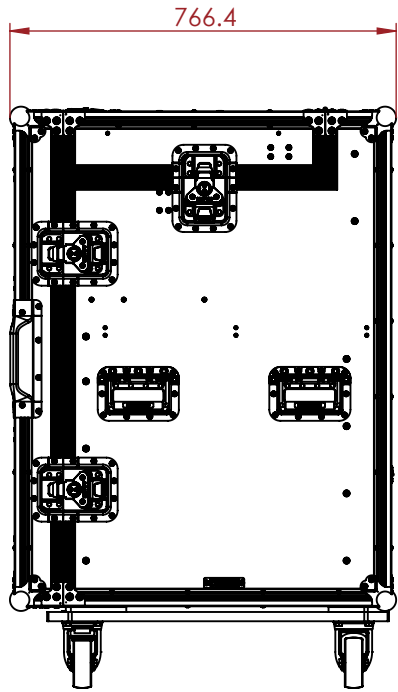
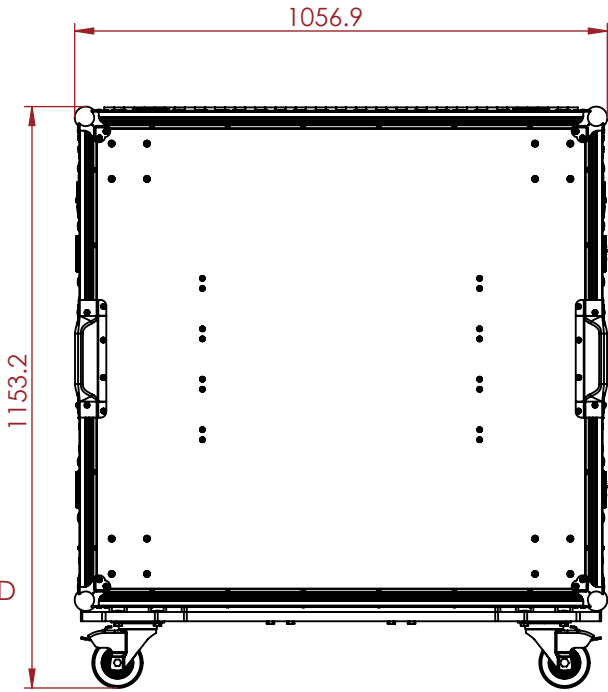
- 2X SMARTSCOPE DUO 4K
- KOGAN 40" FHD TV (SERIES 7 GF7500)
- KEYBOARD

FEATURES

- FRONT LID CAN ACT AS TABLE FOR ADDITIONAL WORKSPACE
- SLAM LID AND HATCH DOOR LOCATED AT THE BACK
- PULL OUT PLATFORM THAT CAN BE LOCKED AT MINIMUM AND MAXIMUM EXTENDED LENGTH
- GAS STRUT SUPPORTED TOP LID

KEY MEASUREMENTS

- WORKBENCH HEIGHT 850MM
- FOLDABLE TABLE TOP HEIGHT 850MM
- MAXIMUM HEIGHT WHEN THE TOP LID IS OPEN 1672.1 MM
- FRONT AND REAR RACK STRIPS DISTANCE 567.1MM
- REAR RACK STRIPS TO REAR PANEL DISTANCE 50MM



NOTES:

REV	DESCRIPTION	DATE
0	ORIGINAL ISSUE	11/03/2024

ESTIMATED WEIGHT (CASE ONLY):

114.52 KG

ITEM CODE:

WS-VR

DRAWN BY:

RP

CHECKED BY:

AS

SCALE:

NTS



MAIL : sales@armorcases.com.au
WEB : www.armorcases.com.au